

FRANKLIN COUNTY

To:	Franklin County	Reviewed:	
	Board Of County Commissioners		
From:	Larry D. Walrod	Extension:	3571
	Planning & Building Dept.		
Date:	January 28 th , 2009	No.	

ITEM:

Naming of new County frontage road.

BACKGROUND:

As part of the realignment for the U.S. 59 Highway project, K.D.O.T. has constructed a new frontage road extending south from Woodson Road ½ mile to Thomas Terrace. This new frontage road parallels the east line of the new 59 Highway right-of-way and was required to provide access to the Southeast Quarter (SE ¼) of Section 23, Township 15 South, Range 19 East, owned by the Floersch Family Trust.

The alignment of this frontage road is similar to the frontage road constructed between Stafford Road and Shawnee Road to serve those properties located easterly of the new 59 Highway right-of-way.

In July, 2007 the County Commissioners adopted Resolution #07-045 waiving the road naming and addressing policies set forth in Resolution #90-26 and approved Missouri Drive as the name for that frontage road.

RECOMMENDATION:

After reviewing the road naming and addressing policies, together with the previous actions of the County Commissioners, Staff recommends that the Board of County Commissioners waive the road naming and addressing policies set forth in Resolution #90-26 and adopt Missouri Drive as the name for the new frontage road located parallel to the east right-of-way for the realignment of U.S. Highway 59 and extending southerly ½ mile from Woodson Road to Thomas Terrace in Section 23, Township 15 South, Range 19 East, Franklin County.

ATTACHMENTS:

Memorandum
Aerial Photo
Site photos

**FRANKLIN COUNTY
PLANNING AND BUILDING DEPARTMENT**

LARRY D. WALROD, PLANNING DIRECTOR

1428 S. MAIN, SUITE #5

OTTAWA, KANSAS 66067-3547

Office: (785) 229-3570 Fax: (785) 229-3504

BOARD OF COUNTY COMMISSIONERS

Karen S. Farrell, District 1

John E. Taylor, District 2

David J. Hood, District 3

Donald C. Hay, District 4

Donald R. Stottlemire, District 5

MEMORANDUM

TO: Franklin County
Board of County Commissioners

DATE: January 21, 2009

FROM: Larry D. Walrod
Planning Director

DEPT: Franklin County
Planning Department

RE: Naming New County
Frontage Road

CC:

BACKGROUND:

As part of the realignment for the U.S. 59 Highway project, K.D.O.T. has constructed a new frontage road extending south from Woodson Road ½ mile to Thomas Terrace. This new frontage road parallels the east line of the new 59 Highway right-of-way and was required to provide access to the Southeast Quarter (SE ¼) of Section 23, Township 15 South, Range 19 East, owned by the Floersch Family Trust.

The alignment of this frontage road is similar to the frontage road constructed between Stafford Road and Shawnee Road to serve those properties located easterly of the new 59 Highway right-of-way.

In July, 2007 the County Commissioners adopted Resolution #07-045 waiving the road naming and addressing policies set forth in Resolution #90-26 and approved Missouri Drive as the name for that frontage road.

RECOMMENDATION:

After reviewing the road naming and addressing policies, together with the previous actions of the County Commissioners, Staff recommends that the Board of County Commissioners waive the road naming and addressing policies set forth in Resolution #90-26 and adopt Missouri Drive as the name for the new frontage road located parallel to the east right-of-way for the realignment of U.S. Highway 59 and extending southerly ½ mile from Woodson Road to Thomas Terrace in Section 23, Township 15 South, Range 19 East, Franklin County.

**BOARD OF COUNTY COMMISSIONERS
OF
FRANKLIN COUNTY, KANSAS**

RESOLUTION NO. 09- _____

A RESOLUTION ESTABLISHING A ROAD NAME, MISSOURI DRIVE, FOR THE NEW FRONTAGE ROAD FROM WOODSON ROAD SOUTH ½ MILE TO THOMAS TERRACE IN THE EAST HALF OF SECTION 23, TOWNSHIP 15 SOUTH, RANGE 19 EAST, FRANKLIN COUNTY KANSAS.

WHEREAS, the Board of County Commissioners of Franklin County Kansas has the authority to layout, alter or discontinue any road within the unincorporated area of the County including such other duties deemed necessary regarding such roads as provided by law; and

WHEREAS, Franklin County has established in Resolution 26-90 a road name and addressing system for all residential, commercial, industrial and public building sites within the unincorporated area of Franklin County; and

WHEREAS, the Director of Planning and Zoning for Franklin County is required to assign addresses for each building site located in the unincorporated areas of Franklin County; and

WHEREAS, the Board of County Commissioners finds that it is in the public interest, safety and welfare to establish road names and addresses for all building sites within the unincorporated areas of Franklin County Kansas; and

WHEREAS, the Commission, having considered the naming of the new frontage road, finds that it is necessary to waive the County road name and addressing system as set forth in Resolution 26-90 for the purpose of naming the new frontage road.

NOW, THEREFORE, BE IT RESOLVED, that the Franklin County Board of County Commissioners does hereby establish the name of Missouri Drive for the frontage road along the East side of the new alignment of US-59 Highway from Woodson Road South ½ miles to Thomas Terrace in the East Half of Section 23, Township 15 South, Range 19 East, Franklin County, Kansas.

PASSED AND ADOPTED by the Franklin County Board of County Commissioners this 28th day of January 2009. This action shall become effective upon publication of this resolution in the official county newspaper.

John E. Taylor
Chairman

Received and recorded this the 28th day of January 2009.

Shari Perry
County Clerk

Missouri Drive
From the intersection with
Woodson Road, South to Thomas
Terrace

Pictures taken January 20, 2009
by the Franklin County Planning
Director.



On Woodson
Road looking
South



On new frontage
road looking North
to Woodson Road

Missouri Drive
From the intersection with
Woodson Road, South to Thomas
Terrace

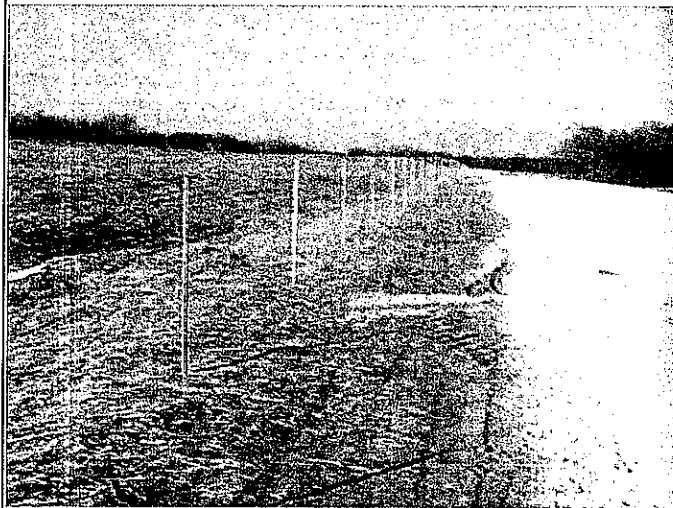
Pictures taken January 20, 2009
by the Franklin County Planning
Director.



At South end of
new frontage
road



Looking North
from South end
of new
frontage road



Missouri Drive
From the intersection with
Woodson Road, South to Thomas
Terrace

Pictures taken January 20, 2009
by the Franklin County Planning
Director.



Looking North to
Woodson Road on
new frontage road