



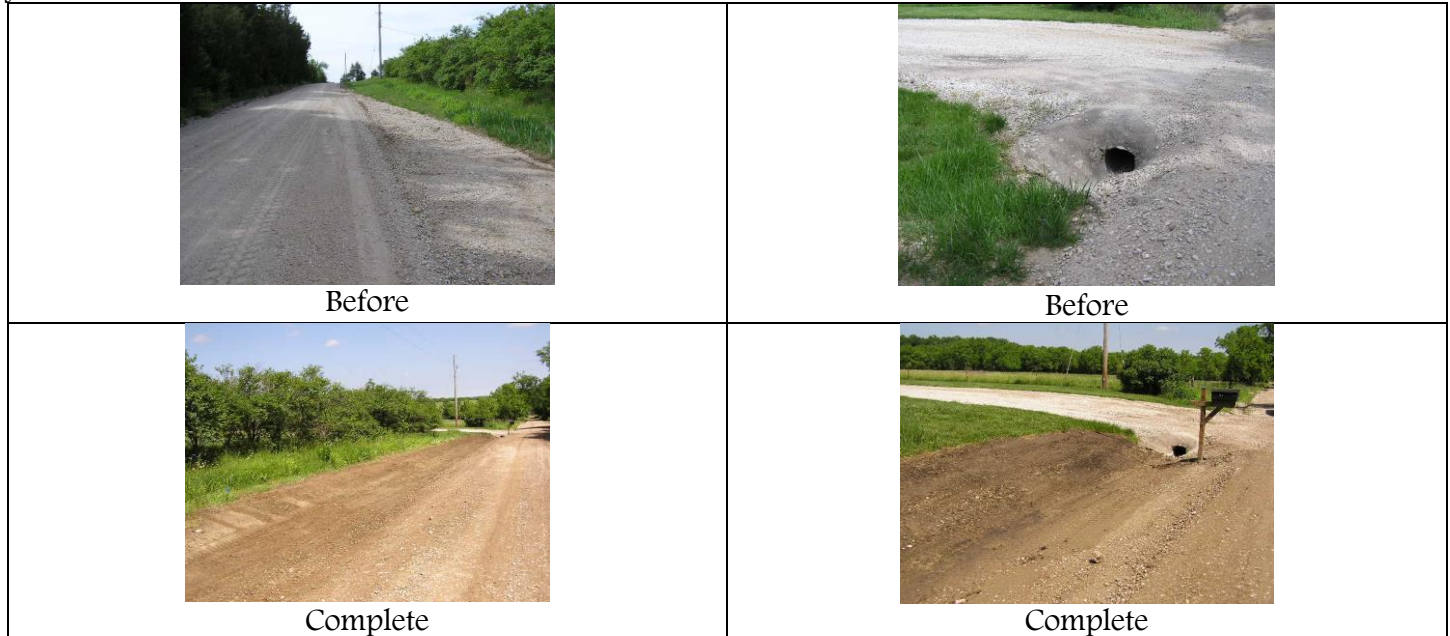
# Public Works Road and Bridge Updates



The Public Works Road and Bridge Department has continued ditch and damage repair in locations that were significantly impacted by the 2019 floods.

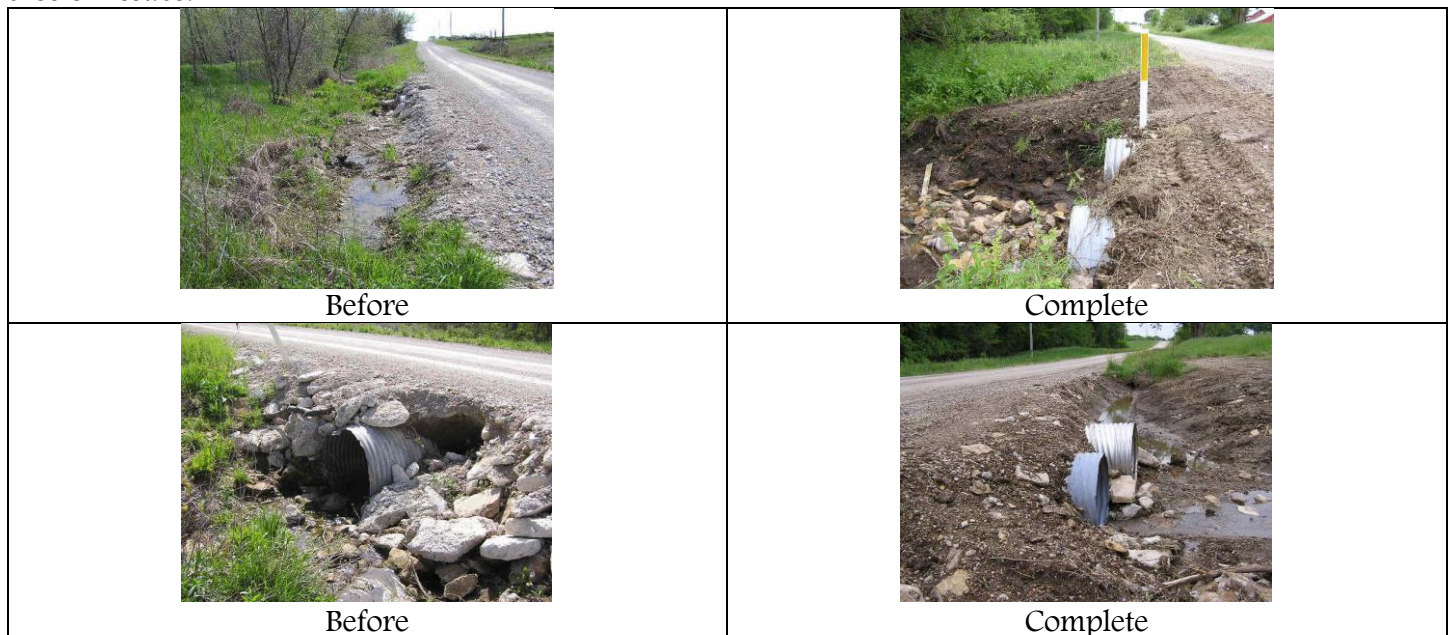
## 764 Tennessee Road:

Erosion caused this ditch to become full of silt. Road and Bridge crews removed the silt and rebuilt the ditch just north of Cloud Road.



## 190 Woodson Road:

The 48" x 40' cross road tube in this location was damaged causing the edge of the road to erode. The tube was replaced with two 36" x 42' tubes to increase the water flow through the location and help mitigate future erosion issues.



**1100 Block of Shawnee Road:**

During routine maintenance repair, a significant structure issue was identified. Public Works Road and Bridge staff noticed a substantial amount of wash-out damage to the bridge abutment (the structure built to support lateral pressure of an arch or span) while adding material to the area. The abutments for this structure consist of laid up stone. Two large stones held the bridge in place.

The County closed the road immediately and began removing silt and vegetation from around the bridge. Temporary cofferdams were placed on each side of the bridge to keep the area dry enough to work under the bridge. Hi Plains, Inc., with the help of County Road and Bridge staff, poured a concrete floor under the bridge and rebuilt the abutment with concrete. The road has been re-opened to traffic although crews are still taking care of the final grading of the project.



Before



Before



Progress



Progress



Completed



Completed